



CITF 建造業
創科基金

CITFDIGEST

二零二一年九月 SEPT 2021 / 第九期 ISSUE 9

融匯科技 創建香港 WE INNOVATE, WE BUILD

基金申請攻略 [網上申請3步驟]

Practical tips for applying the CITF (Three-step application on the CITF portal)

1



於基金網站 www.citf.cic.hk
的基金電子申請平台開設帳號

Create an account on
the CITF application portal via
CITF website www.citf.cic.hk



2



細閱使用需知和準備所需文件:

- ① 商業登記證(BR)
- ② 周年申報表
- ③ 銀行月結單
- ④ 報價單及 ⑤ 其他 (如需要)

Read the User Guide and prepare
required documents:

- ① Business Registration (BR) Certificate
- ② Annual Return (NAR1)
- ③ Bank Statement
- ④ Quotation(s) and ⑤ others (if required)

3



於基金電子申請平台
填妥和提交基金申請表

Complete and submit the application
form on the CITF application portal



全面網上申請
就在彈指之間

Online application
at your fingertips



快速處理

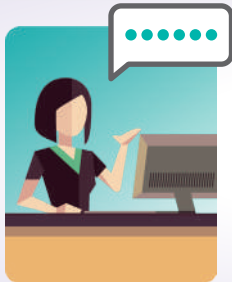
在收妥完整申請資料後，申請
「預先批核名單」產品的申請者
一般於30個曆日內獲通知申請結果

Speedy processing

Applicants will be notified of the application results within
30 calendar days for Pre-approved List items, upon
receipt of complete information



基金預先批核名單
Pre-approved List



基金秘書處提供一對一諮詢服務

One-on-one consultation service

from the CITF Secretariat

☎ 2100 9000 ✉ citf@cic.hk

常見問題FAQs



問Q

我們可否先購置科技 / 產品，然後申請基金？
Can we purchase technology / product first before applying for the CITF?

答A

在正式遞交基金申請前的所有已承諾開支（即訂購單確認日期早於遞交基金申請日期），均不符合基金資助的資格。
Expenses incurred before submitting the CITF application (i.e. the date of confirmed purchase order was before the date of submitting CITF application) will not be reimbursed.



問Q




我們需就擬申請資助的科技產品索取多少報價？若我們未能取得所需報價資料，是否不能申請？

How many quotations are required for funding applications? If we are unable to obtain the required quotations, can we still apply?

答A

需要索取的報價單數量如右圖表。如未能取得所需報價單數量或非根據價低者得的原則甄選供應商，申請者須在基金申請表上提交充分理據以供審批。

The required number of quotations is shown in the right table. Applicants shall provide further justifications if failing to submit the required number of quotations or accept the lowest conforming offer.

每次採購總額 Aggregate value of every procurement	供應商書面報價單數量 No. of quotation(s) in written form from suppliers or service providers
等於或不多於港幣 50,000元 Equivalent to or below HK\$50,000	最少一家 at least one 
介乎港幣 50,001元至港幣 200,000元 Between HK\$50,001 and HK\$200,000	最少兩家 at least two 
多於港幣 200,000元 Over HK\$200,000	最少三家 at least three 

問Q

申請者選擇供應商或服務供應商進行採購的標準是什麼？

What is the criteria for selecting suppliers or services providers?

答A

申請者須根據價低者得的原則甄選供應商或服務公司

The applicant shall select the supplier or service provider with the lowest conforming bid.



問Q

基金支持那些科技 / 產品？

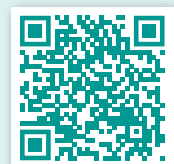
What technologies / products does the CITF support?

答A

詳情可參考基金預先批核名單上的科技 / 產品。至於其他透過自動化、工業化和數碼化的創新技術（包括機械、設備及軟件），若證實能促進生產力、提高建造質素、改善工地安全或提升環保效益，也可獲得基金支持。

Please refer to the items / technologies on the CITF Pre-approved Lists. The CITF also supports innovation and technologies (including machinery, equipment and software) which are proven effective in boosting productivity, uplifting build quality, improving site safety or enhancing environmental performance through leveraging automation, industrialisation and digitisation.

基金預先批核名單
Pre-approved List



與 CITF 對話 CHATS

政府成立建造業創新及科技基金(基金)的目的，是為促進建造業採用創新科技。除了上市公司，中小型企業(中小企)也可通過基金資助，提升應用科技的能力。我們邀請了一些中小企分享基金如何協助他們。

The government has established the Construction Innovation and Technology Fund (CITF) to promote the adoption of innovative technologies in the construction industry. In addition to listed companies, small and medium enterprises (SMEs) can also leverage the CITF to enhance their ability to embrace technology. We have invited some SMEs to share how CITF can assist them.

公司 Company

思建設計顧問
有限公司
C Arch Design
Consultant
Limited



購買的產品及獲批資助 Procured Products & Approved Grant

預先批核名單項目：
建築信息模擬軟件 — Revit
(PBS18-002)
非預先批核名單項目：
三維渲染軟件 — Lumion和建築
信息模擬硬件
獲批資助：約港幣71,000元
Pre-approved item:
BIM Software – Revit (PBS18-002)
Non-approved item:
3D Rendering Software – Lumion
and BIM Hardware
Approved grant: around HKD\$71,000

心得 Sharing

Revit能更準確地反映設計細節，並根據最新變化迅速作出調整，有助促進跨界別合作和改善整個建築周期。另一方面，Lumion能改善數據互動及準確度，有助我們有效地向客戶傳達設計理念及其後修訂的設計。基於上述種種優點，我們會向業界推介這兩款軟件。

Revit helps facilitate multi-disciplinary collaboration and enhance the entire construction cycle with its detailed and accurate design representations as well as support for quick adaptation to new changes. As to Lumion, it helps us effectively communicate our conceptual design and subsequent adjustments to clients with improved data interactivity and fidelity. In view of the aforesaid advantages, we will recommend these two software to the industry.

其他意見 Other Comments

(i) 申請程序 — 簡單易明，不用提交紙本申請書，既環保又方便；以及 (ii) 審批過程 — 申請撥款需提交繁複的資料，希望可簡化提供資料的要求。

(i) Application procedures: Easy and user-friendly. Paperless submission is a green and convenient arrangement. (ii) Approval process: Information required for funding disbursement is complicated. Simplifying data requirements will be a welcoming move.

基金秘書處回應：我們正藉著中期檢討的契機審視如何進一步簡化申請流程。

Feedback from the CITF Secretariat: We are taking the opportunity of the Mid-term Review to explore how to further simplify the application procedures.

怡俊工程
有限公司
Easy Smart
Engineering
Limited



預先批核名單項目：
喜利得自適應扭矩 (PA18-039)
獲批資助：約港幣117,000元
Pre-approved item:
Hilti Adaptive Torque (PA18-039)
Approved grant: around HKD\$117,000



喜利得自適應扭矩可自動調節扭力，不但可提高生產力及扭力準確度，更可減低工人因使用傳統工具而勞損的機會。扭矩只需掃描條碼便可完成設定，易於操作。

Automatic adjustment of torques can not only improve productivity and torque accuracy, but also reduce the strain caused by the use of conventional tools. Hilti Adaptive Torque requires simple barcode scanning to finish the set up, which makes it easier to operate.

Feedback from the CITF Secretariat: We will review how to integrate the content of the existing check list for a clearer presentation of the required documents. As for the final report, we will consider providing a template on the CITF website for applicants' reference.

為利便撥款申請，基金秘書處可提供更清晰的指示及程序，讓申請人遵循。舉例來說，秘書處可擬備一份清單，逐項列出需提交的所有文件，包括總結報告、當中內容及格式要求，供申請人參考。

To facilitate smooth funding disbursement, the CITF Secretariat may provide clearer instructions and procedures for applicants to follow. Say, a check list detailing all required documents item by item, including the Completion Report, its content and format requirements would do applicants a favour.

基金秘書處回應：我們會檢視如何整合現有清單內容，以更清晰地列出所需提交文件。至於總結報告，我們會考慮於基金網站提供範本予申請者作參考。

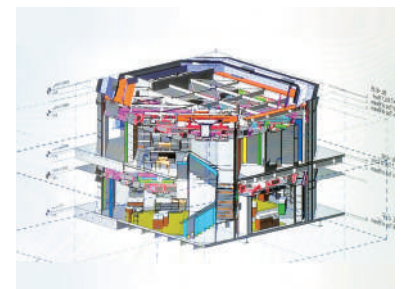
法利士
有限公司
Ferrier Chan
& Partners
Limited



預先批核名單項目：
建築信息模擬軟件 — Revit
(PBS18-002)
非預先批核名單項目：
建築信息模擬硬件
獲批資助：約港幣151,000元
Pre-approved item:
BIM Software – Revit (PBS18-002)
Non-approved item: BIM Hardware
Approved grant: around HKD\$151,000

建築信息模擬軟件有助設計團隊在項目設計階段便能了解空間方面的要求。如業界有足夠的專才使用建築信息模擬，此軟件實在值得推介使用。

BIM software helps our design team apprehend spatial requirements at the project design stage. If there is a sufficient pool of BIM talents, it is worth recommending the software to the industry.



基金申請程序清晰易明，我們在申請過程中沒有遇到困難。不論是申請預先批核名單上的建築信息模擬軟件，還是非預先批核名單上的探地雷達，程序大致相同，問題不多。

Thanks to the clear application procedures of the CITF, we encountered no difficulties in submitting our applications. Be it pre-approved BIM software or non-preapproved GPR, the procedures are roughly identical without much complications.

偉邦香港
有限公司
Viewbond
Hong Kong
Limited



預先批核名單項目：
建築信息模擬軟件 — Revit
(PBS18-002)
非預先批核名單項目：
探地雷達和建築信息模擬硬件
獲批資助：約港幣262,000元
Pre-approved item:
BIM Software – Revit (PBS18-002)
Non-approved item:
Ground Penetrating Radar (GPR) and
BIM Hardware
Approved grant: around HKD\$262,000



探地雷達提供170MHz及600MHz雙頻探測，可拍攝深至10米的電磁輻射影像，而且解像度十分清晰。探地雷達在探測地下管道時，亦能同時收集多類清晰的資訊，對於後期數據處理及結果分析有莫大幫助。測量過程中所得的B-scan數據，可即時用作初步分析。數據經處理後可應用於建築信息模擬模型。探地雷達易於操作，測量員只要接受過測量及分析方面的專業訓練，便能使用探地雷達收集清晰的資訊。

The GPR provides dual-frequency detection at 170MHz and 600MHz respectively, enabling the capture of high-resolution electromagnetic radiation images at a depth of 10 meters. The GPR can simultaneously collect a wide range of information with clarity while detecting underground pipelines, providing great assistance to data processing and result analysis at a later stage. Preliminary analysis can be immediately conducted on B-scan data generated during surveying. Processed information can be later applied in BIM models. It is easy to operate GPR. As long as the surveyor is professionally trained for measurement and analysis, he can collect clear information with the GPR.



中小企最常申請的預先批核科技產品 Most commonly applied Pre-approved Technologies among SMEs

* 預先批核名單編號
* Pre-approved List Code

產品類型
Product Type

銷售渠道
Vendor Contact

先進建築物料 Advanced Construction Material

* PA20-084 | 合成石材渠蓋板 / 樹圍蓋板 Synthetic Stone Grating / Tree Pit

輕身合成石材物料 Lightweight Synthetic Stone Material

該產品是一款輕量，預製複合石材格柵(疏冷)。它的成份包括樹脂 / 聚合物材料 / 石英砂，天然或回收的碎石和回收的填料，經真空高壓而製成。

This product is a light weight, precast synthetic stone gratings units fabricated by resin / polymer material / quartz sand, natural or recycled crushed stone and recycled fillers through compaction under vacuum and high pressure compression process.



菲普國際
有限公司
Fibrpro
International Ltd.
☎ 3568 3417

先進設備 Advanced Equipment

* PA18-039 | Adaptive Torque System (AT System) (只提供英文名稱)

扭矩扳手 Torque Wrench

此產品配有感應器，以確保螺栓已根據 ETA 及 ICC-ESR 規格安裝。同時，產品能連上電腦並製作螺栓安裝報告，為每顆螺栓提供全面及可靠的紀錄。

This tool is equipped with the sensors and onboard intelligence to confirm if an anchor has been set according to ETA and ICC-ESR specifications. Besides, it can be connected to computer to instantly generate a comprehensive and reliable installation report.



喜利得(香港)
有限公司
Hilti (Hong Kong)
Limited
☎ 8228 8118

* PA19-017 | PS1000 雷達型混凝土掃瞄儀和顯示器 Radar Type Concrete Scanning Machine with Display

暗藏管線掃瞄器 Concealed Services Scanner

此產品適用於鑽孔前探測嵌入在混凝土內的材料(不限於鋼筋)。它採用雷達技術，能探測混凝土內300 毫米深及達致+/-10 毫米準確度，避免鑽孔時破壞其他材料。PS1000 亦附有顯示屏，能顯示掃瞄的影像，準確量度尺寸。PS1000 is used for detecting embedded materials (not only rebar) inside concrete before drilling. It utilises radar technology to detect up to depth 300mm of concrete with accuracy +/-10mm to prevent clashing while drilling. PS1000 also includes a table display which can display the scanned image to achieve accurate measurement.



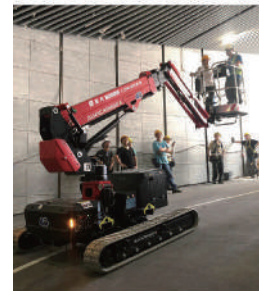
喜利得(香港)
有限公司
Hilti (Hong Kong)
Limited
☎ 8228 8118

* PA19-041 | 柴油 / 電動伸縮臂升降台 Diesel / Electric Boom Lift 型號 Model: ALMAC JIBBI 1250 EVO, 1250 ELC, 1670 EVO, 1670 LTH

工作台 Working Platform

伸縮臂升降台比絞剪升降台提供更大的覆蓋範圍，讓工人可到達一般難以靠垂直升降抵達的工作地點。此產品可以在斜坡或崎嶇地形行走及工作，可大量減少使用傳統棚架工作台因移動位置而需要搭拆的時間。傳統升降工作台只能在平地或不多於3至5度的傾斜工作，而這部絞剪升降台可在15度的斜坡或崎嶇地形為工人提供安全的工作環境。

This articulated working platform has a wider coverage than scissor platform. It enables workers to reach working areas which are difficult to access. The product can be operated on slope, uneven and rough terrain. It can save much time for erection and dismantling of traditional scaffold work platform on inclined surface which has to be shifted zone by zone. Compared to traditional product which only supports works on flat and even surface with a maximum of 3-5 degree inclination, this product can provide a safe condition for workers even in slopes up to 15 degrees or uneven terrain.



現代(國際)棚架
設備有限公司
Modern (Int'l)
Access &
Scaffolding Ltd
☎ 2745 6011

* PA20-121 | Effer 隨車吊機 Effer Truck Mounted Crane 型號 Model: 525/4S, 525/6S, 525/8S, 685/6S, 685/8S, 685/9S, 955/6S, 955/8S, 955/9S, 1255/6S, 1255/8S, 1255/9S

吊機 Lifting Crane

此產品配備了穩定控制系統(Progress 2.0)，可以實時監測並顯示起重機在不同支撐腿伸張狀態或起重條件下的安全工作負荷。

This product is equipped with Stability Control System (Progress 2.0) which can continuously monitor and indicate the Safe Working Load at different outrigger extensions or load lifting conditions of the crane on a real-time basis.



大眾機械設備
有限公司
Folks Machinery
and Equipment
Limited
☎ 2649 9282

先進科技方案 Advanced Technological Solutions

* PA19-022 | SilentUP 可拆式隔音屏障 Retractable Noise Barrier

隔音屏障 Noise Barrier

這是一款獨立便攜式隔音屏障，有效阻隔建築噪音達7米高。它只需用水馬代替混凝土作地基及人手可安裝整個隔音屏障。此產品採用自動減輕風荷載機制以顯著減低結構負載要求。它可改善生產力及工地安全。由於屏障可循環再用，故可減少浪費。

SilentUP is a standalone retractable noise barrier for construction noise control up to 7m high. It does not require concrete foundation but water barriers only. The entire structure can be installed by labour without machine aid. SilentUP adopts an Automatic Wind Load Relieving Mechanism which reduces the structure loading requirement significantly. It improves the productivity and safety of work. It is reusable and so waste can be reduced.



創新聲學
有限公司
Acoustics
Innovation
Limited
☎ 6298 1533

資料僅供參考，詳情請聯絡個別供應商。 For reference only. Please contact respective vendors for details.



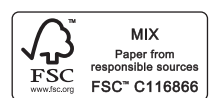
(852) 2100 9000
(852) 2100 9090
enquiry@cic.hk
<https://www.citf.cic.hk>



Follow & Like us
CITF 建造業創新及科技基金



citf.cic.hk



自動化設備 Automated Equipment

* PA19-029 | DST 20-CA 牆鋸 Wall Saw

牆鋸機器 Wall Saw Machine

此牆鋸可自動進行切割工序。用家可透過無線遙控在遠離施工位置操作牆鋸，並在遙控器的屏幕即時顯示切割深度，從而改善安全。此外，用家只需輸入簡單參數便可提升切割的效能及精準度。
This wall saw automates the cutting process. It could be remote-controlled at distances away from the work area by wireless control. Information on the cutting depth displayed on the remote controller screen helps improve safety. With simple setting of job parameters, it can also improve cutting efficiency and accuracy in the cutting process.



喜利得(香港)有限公司
Hilti (Hong Kong) Limited
☎ 8228 8118

* PA20-001 | 徠卡BLK360迷你鐳射掃描儀 Leica BLK 360 Laser Scanner

激光掃描器 Laser Scanner

徠卡BLK360迷你鐳射掃描儀可捕捉高精度準確點雲上的彩色全景影像。此產品是同類型最細及最輕的鐳射掃描儀，只需簡單一個按鈕便可操作。用戶只要使用平板電腦即可捕捉高解像度三維全景影像。
Leica BLK360 Laser Scanner can capture photos with full-colour panoramic images overlaid on a high-accuracy point cloud. Simple operation requires only a single push of the button. This product is the smallest and lightest of its kind. User can capture high resolution 3D panoramic images with tablet.



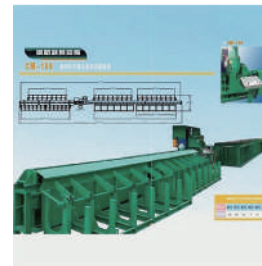
徠卡測量系統有限公司
Leica Geosystems Limited
☎ 2161 3880

* PA20-005 | Y50 鋼筋裁剪設備 Automated Rebar Cutting Equipment 型號 Model: CM-180T

自動鋼筋裁剪機 Automatic Bar Cutting Machine

這是一款專門為香港鋼筋加工行業製造的Y10-Y50鋼筋自動化裁剪設備。採用液壓系統，力量更強，工地及廠房皆可使用。單人操作，按鍵選擇便可以自動量度、裁剪、分開、擺放。節省人手、勞動力、時間，減少誤差、損耗，減少工業意外發生，從而提高生產力。

This product, adopting a powerful hydraulic system specialised for the local Y10-Y50 rebar processing industry, is suitable for construction site or factories. Measuring, cutting, detaching and placing can be handled by just one operator. It helps save manpower, enhance accuracy and quality standard, reduce wastage and improve site safety, thus boosting productivity.



專業機械設備有限公司 / 進展工程有限公司
Machinery Expert Limited / Chun Chin Engineering Co. Ltd
☎ 2483 1289 / 6016 6020

* PA20-038 | Y16 鋼筋自動數控彎箍機 Automated Stirrup Machine 型號 Model: AM-D16

自動鋼筋屈曲機 Automatic Bar Bending Machine

此產品是自動數控彎箍機，透過電腦化能自動彎曲多邊形及圓形鋼筋。它可節省人手、提升準確度及減少損耗、改善工地安全，提高生產力。

The automatic rebar stirrup bending machine leverages computerised control to automate the making of all types of polygon and circle. It helps save manpower, enhance accuracy and quality standard, reduce wastage, improve site safety and boost productivity.



專業機械設備有限公司
Machinery Expert Limited
☎ 2483 1289

數碼化建築工序 Digitized Construction Operation

* PA18-035 | Novade (只提供英文名稱)

工程項目管理軟件 (數碼工地監督系統相關) Project Management Software (DWSS-related)

此產品能提供一站式工程管理服務，以電腦、平板、手機等裝置管理質量安全、物流維修、人力資源等。主要功能包括：1) 表格及清單標註圖紙；2) 數碼簽署；3) 地圖；4) QR CODES/ NFC 標籤；5) 圖表標示。(註：此產品設有若干數碼工地監督系統功能，詳情請向供應商查詢。)

This product provides a full range of solutions for project to manage quality, safety, logistics, maintenance, workforce & activity. The mobile-ready platform includes key functions: 1) Forms & Checklists - Drawing Mark-ups; 2) Digital Signatures; 3) Map Locations; 4) QR Codes & NFC Tags; 5) Picture Annotations (Note: This product has certain DWSS functions which the vendor shall be inquired for details.)



群鉅科技有限公司
Spatial Technology Ltd.
☎ 2636 6102

物聯網 Internet of Things (IoT)

* PA20-073 | 鷹網智能監測系統 I-Vision Smart Monitoring System

安全監測系統 Safety Monitoring System

此產品是一套用於重型建築機械的安全監測系統。它能提供360度全景鳥瞰合成影像，讓操作員可在駕駛艙內透過屏幕，全景檢測1米範圍內的障礙物，和實時獲取周邊環境之影像。如有障礙物進入預設範圍時，系統會發出聲音警報和信號燈，從而保障機械附近工人的安全。

This safety monitoring system in heavy construction plants is specifically designed for application to detect obstacles and acquire real-time images of surrounding environment. It provides synthesized image with 360 degrees bird's-eye view and panoramic detection of obstacles within 1 metre. Siren and signal light will be activated when there are obstacles in the detection range, improving nearby workers' safety when the plant is in operation.



港進建機服務中心有限公司
Kong Chun Construction Machinery Services Centre Limited
☎ 2475 1083

* PA20-093 | Autodesk Docs - CLOUD Commercial New Subscription (只提供英文名稱)

三維實況模擬/數據管理 (通用數據環境相關平台) 3D Reality Simulation / Data Management (CDE-related)

這是一款建築文件管理軟件，可於任何時間及地點共享、檢視、比對、標記、批准及管理建築圖紙、文件及模型。它可減少誤差，方便決策及改善工程結果。(註：此產品是通用數據環境相關平台，詳情請向供應商查詢。)

It is a construction document management software which enable users to share, view, compare, markup, approve and manage construction drawings, documents, and models anytime and anywhere. It can reduce errors, facilitate decision making and improve project outcomes. (Note: This product is CDE-related platform. Please contact the vendor for details.)



Autodesk Inc
(只提供英文名稱)
☎ 2824 2338

物聯網 Internet of Things (IoT)

* PA20-094 | BIM Collaborate - Packs CLOUD Commercial New Subscription (formerly known as BIM 360 Coordinate) (只提供英文名稱)

三維實況模擬 / 數據管理 3D Reality Simulation / Data Management

此建築信息模擬合作軟件可於工地或辦公室進行施工可行性檢討流程，並在施工前確定昂貴事宜。透過碰撞解決工作流程可加快協調不同範疇。(註：此產品是通用數據環境相關平台，詳情請向供應商查詢。)

This BIM collaboration software is intended for conducting constructability reviewing process at the project site or office. It also identifies costly issues during preconstruction stage. It can speed up multi-discipline coordination with clash resolution workflows. (Note: This product is CDE-related platform. Please contact the vendor for details.)



Autodesk Inc
(只提供英文名稱)
☎ 2824 2338

* PA20-108 | Leica Cyclone 系列 Series 3DR (Pro Edition), MODEL, SURVEY, PUBLISHER, REGISTER (只提供英文名稱)

三維實況模擬 / 數據管理 3D Reality Simulation / Data Management

3DR (Pro Edition) 是一種點雲後處理，網格模型生成和模型比較桌面軟件可提供專門的工作流程，以滿足交通，建築，土地測量和油罐檢查等關鍵行業的需求。

MODEL / SURVEY 是一種點雲數據處理和模型可視化桌面應用程序，它允許在給定模型中進行自動管道徑建模(只適用於MODEL，不適用於Survey)，並為許多耗時的任務提供自動化方法，甚至允許多個用戶同時處理相同的數據集。

PUBLISHER Pro 是一個模型發布應用軟件，用於創建可在其他處理軟件，如 Cyclone (Leica)，JetStream，TruView和CloudWorx系列中使用的文件，並通過LGS檔案，Leica Geosystems通用數字檔案，提供簡單數據獲取的用戶體驗。

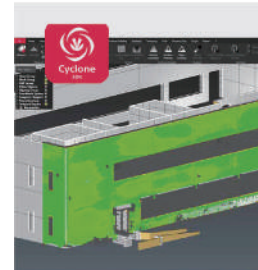
REGISTER 是一個點雲註冊應用程序，它允許導入和處理從Leica或其他品牌的激光掃描儀，例如Faro，Z + F，獲得的原始數據，而其他軟件則只能處理自己品牌的原始數據，而不能處理Leica。該軟件可以處理來自其他品牌的激光掃描儀和徠卡的點雲數據。它的SmartAlign功能可以根據常見的幾何圖形自動對齊模型。

3DR (Pro Edition) is a point cloud post processing, mesh model generation and model comparison desktop software which offers specialised workflows to meet the needs of key industries with applications in transportation, architecture, land surveying and tank inspection.

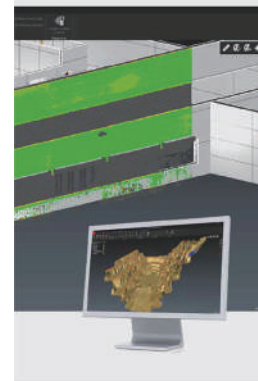
MODEL / SURVEY is a point cloud data processing and model visualisation desktop app which allows automatic-pipe run modeling in a given model (for MODEL only, not available in SURVEY) and provides automated methods for lots of time-consuming tasks. It allows multiple users to work on the same data sets simultaneously.

PUBLISHER Pro is a model publication app for creating files that can be used in other processing software like Cyclone (Leica), JetStream, TruView and CloudWorx families and providing simple data access and a streamlined user access experience via the LGS file, Leica Geosystems universal digital reality file.

REGISTER is a point cloud registration app which allows import and processing of the raw data obtained from Leica or other brands of laser scanners such as Faro, Z+F while other software could only process the raw data of their own brands but not Leica. This software could process point cloud data from other brands of laser scanners and from Leica. Its SmartAlign function can align models automatically based on common geometry.



徠卡測量系統
有限公司
Leica
Geosystems
Limited
☎ 2161 3891



* PA21-005 | 厘米級精準度GNSS定位的工業級平板電腦 - Nilamtec T3F Nilamtec T3F Multi-Band High Precision GNSS Tablet

位置測量儀器 Position Surveying Tool

此產品是一款手提式設備，連接專業外部全球導航衛星系統天線，具有全球導航衛星系統定位功能，提供高精度的測量工程。

This handheld device, equipped with GNSS positioning capability connected to professional external GNSS antenna, can provide high precision for surveying work.



Strobus (Far East)
Limited
(只提供英文名稱)
☎ 2690 3773

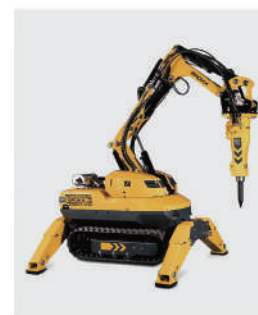
機械人 Robotics

* PA19-002 | 布洛克多功能破拆機器人 Brokk Demolition Robots 型號 Model: B60, B70, B110, B170, B200, B300, B500, B800S

拆卸機械人 Demolition Robot

此產品是一遙控拆卸機械，相較傳統挖土機輸出高達五倍。小巧機身能令機械輕鬆進入狹窄空間及上落梯級。透過遙控裝置，此機械之最小型號B60已經能取代3-5人的人手打鑿效率。同時，產品令工人遠離危險區域，提升工地安全；機械以電力推動，不會排放廢氣，提升工地環保表現。

This remote controlled demolition robot can outperform the existing excavators five times as its size. The weight and size of Brokk facilitate its accessibility in locations like narrow spaces and stairs. Through remote control, even the smallest model of Brokk machines B60 can replace manual method of 3 to 5 workers with jackhammers. Construction site safety can be improved as workers are not exposed to harmful vibrations and other hidden dangers on site. Moreover, Brokk robots are electric driven with no fumes exhausted like conventional excavators, thereby enhancing environmental performance.



高仕洋行
有限公司
C. Crossfield
& Co., Ltd.
☎ 2753 8500

資料僅供參考，詳情請聯絡個別供應商。 For reference only. Please contact respective vendors for details.

「建造業創新及科技基金」申請數字節節上升 CITF application figures are on the rise

由2018年10月至今已收到逾二千七百份申請，當中二千多份申請已經成功獲批，總資助額逾港幣五億一千萬元。

Counting from October 2018, the application number has reached more than 2 700, of which over 2 000 applications have been approved. The funding grant amount is more than HK\$510 million.

